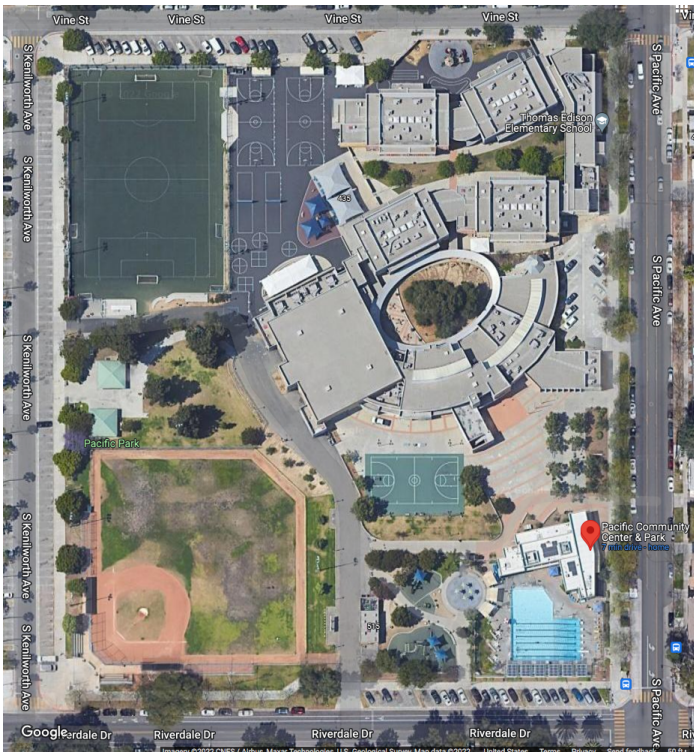


Site-by-Site Analysis of Pollution and Heat Conditions

In this document, please find information about the current conditions at each proposed site and specific concerns at each site. Information comes from [CalEnviroScreen](#) and [Redlining and Exposure to Urban Heat Islands](#). Three of the sites (Fremont Park, Pacific Park, and Cerritos Park) are located in heat islands and pollution hot spots. These three locations in South Glendale have high proportions of minorities, renters, and low income populations who have limited access to green space.

Of particular concern, two sites are located at Title I schools (Cerritos Elementary, and Woodrow Wilson Middle School) where the fields are the primary green space. Schools that have mainly impervious surfaces that feel like prison campuses contribute to: higher temperatures, worse air quality, more bullying, lower test scores, disconnect with nature, and higher stress. Campuses that envelope students and staff with green spaces do the opposite. They relieve stress and enhance mental health, they encourage play, they cool surroundings, they lower energy costs for cooling buildings, they reduce schoolyard and local area flooding, they enhance social-emotional functioning and pro-social and cooperative behavior, they lead to improved academic performance and they offer a chance for children to experience and connect with nature.

Pacific Park:



4.5 °F higher than citywide average

77% impervious surface

4% tree covered

Minority: 56%

Households Below Poverty Level: 20%

Specific Concerns re installing Artificial Turf at this location:

- Site is in South Glendale, already hit hard with lack of open space and high levels of heat. Site is already 6-9° F hotter than North Glendale. Adding a synthetic turf field will increase site temperatures significantly.
- Site is already hard hit with pollution in all categories.
- As natural grass fields, these spaces would be available for other uses at times when games are not played.

Pacific Park Census Tract: 6037302302 (Population: 5,337)

The results for each indicator range from 0-100 and represent the percentile ranking of census tract 6037302302 relative to other census tracts.

Overall Percentiles

CalEnviroScreen 4.0 Percentile	98
Pollution Burden Percentile	98
Population Characteristics Percentile	89

Exposures

Ozone	69
Particulate Matter 2.5	72
Diesel Particulate Matter	71
Toxic Releases	93
Traffic	57
Pesticides	0
Drinking Water	76
Lead from Housing	73

Environmental Effects

Cleanup Sites	95
Groundwater Threats	60
Hazardous Waste	95
Impaired Waters	59
Solid Waste	84

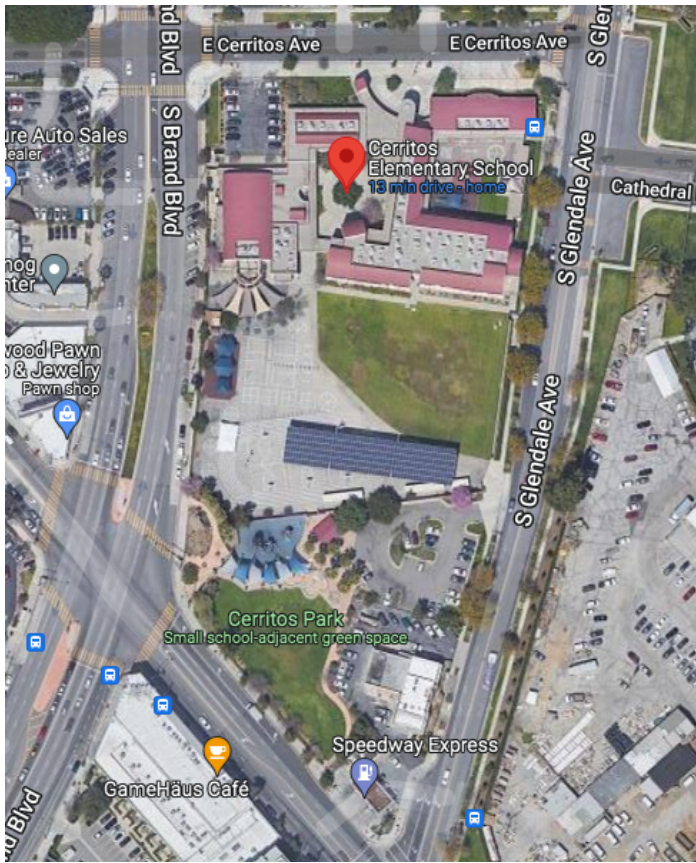
Sensitive Populations

Asthma	77
Low Birth Weight	61
Cardiovascular Disease	89

Socioeconomic Factors

Education	67
Linguistic Isolation	97
Poverty	71
Unemployment	66
Housing Burden	86

Cerritos Park:



Data unavailable but similar to Pacific

Specific Concerns re installing Artificial Turf at this location:

- Site is in South Glendale, already hit hard with lack of open space and high levels of heat. Site is already 6-9° F hotter than North Glendale. Replacing the grass field with a synthetic turf field will increase site temperatures.
- Site is already hard hit with pollution in all categories.
- Cerritos Elementary is a Title 1 School with 486 K-6 students. 83% of students are from low-income families.
- As a natural grass field, this space would be available for other use at times when games are not played.

Cerritos Park
Census Tract: 6037302505 (Population: 4,376)

The results for each indicator range from 0-100 and represent the percentile ranking of census tract 6037302505 relative to other census tracts.

Overall Percentiles

CalEnviroScreen 4.0 Percentile	96
Pollution Burden Percentile	96
Population Characteristics Percentile	85

Exposures

Ozone	67
Particulate Matter 2.5	70
Diesel Particulate Matter	73
Toxic Releases	75
Traffic	57
Pesticides	0
Drinking Water	76
Lead from Housing	74

Environmental Effects

Cleanup Sites	92
Groundwater Threats	89
Hazardous Waste	72
Impaired Waters	59
Solid Waste	44

Sensitive Populations

Asthma	47
Low Birth Weight	63
Cardiovascular Disease	66

Socioeconomic Factors

Education	75
Linguistic Isolation	98
Poverty	89
Unemployment	86
Housing Burden	99

Sports Complex:



Data Unavailable.

Nearby areas show about 6 °F cooler than city average.

Specific Concerns re installing Artificial Turf at this location:

- There is an increased fire risk
- Plastics easily shed into the Verdugo Wash

Sports Complex

Census Tract: 6037300800 (Population: 7,280)

The results for each indicator range from 0-100 and represent the percentile ranking of census tract 6037300800 relative to other census tracts.

Overall Percentiles

CalEnviroScreen 4.0 Percentile	41
Pollution Burden Percentile	78
Population Characteristics Percentile	23

Exposures

Ozone	77
Particulate Matter 2.5	59
Diesel Particulate Matter	53
Toxic Releases	67
Traffic	81
Pesticides	0
Drinking Water	98
Lead from Housing	64

Environmental Effects

Cleanup Sites	31
Groundwater Threats	78
Hazardous Waste	36
Impaired Waters	24
Solid Waste	0

Sensitive Populations

Asthma	10
Low Birth Weight	30
Cardiovascular Disease	22

Socioeconomic Factors

Education	21
Linguistic Isolation	70
Poverty	25
Unemployment	47
Housing Burden	54

Fremont Park:



- 3 °F higher than citywide average**
- 72% impervious surface**
- 5% tree covered**
- Minority: 42%**
- Households Below Poverty Level: 20%**

Specific Concerns re installing Artificial Turf at this location:

- The proposed field would remove one third of the open green space.
- Site is in South Glendale, already hit hard with lack of open space and high levels of heat. Site is already 5-8° F hotter than North Glendale. A massive synthetic turf field will increase site temperatures.
- Site is already hard hit with pollution in all categories.
- As a natural grass field, this space would be available for other use at times when games are not played.

Fremont Park
Census Tract: 6037301701 (Population: 2,962)

The results for each indicator range from 0-100 and represent the percentile ranking of census tract 6037301701 relative to other census tracts.

Overall Percentiles	
CalEnviroScreen 4.0 Percentile	87
Pollution Burden Percentile	99
Population Characteristics Percentile	57

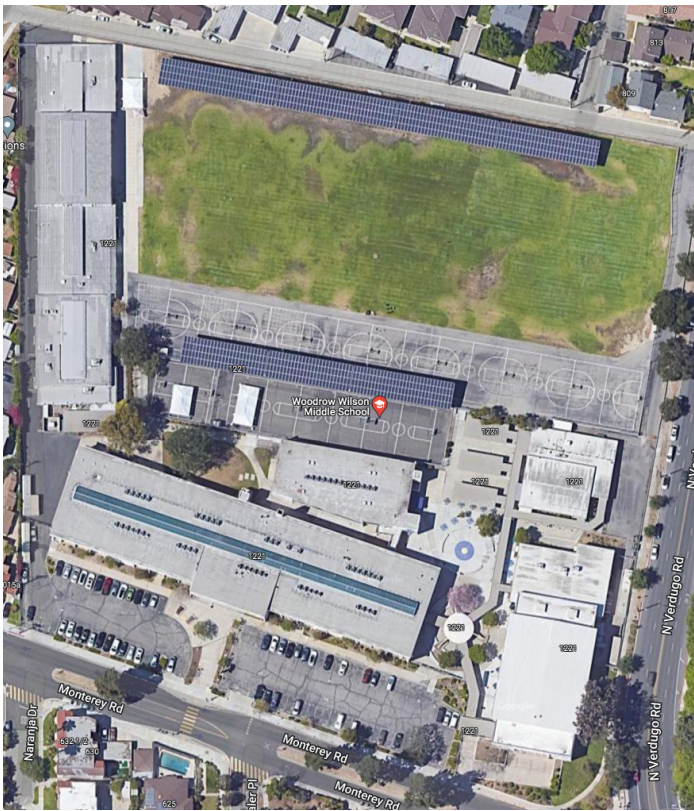
Exposures	
Ozone	74
Particulate Matter 2.5	70
Diesel Particulate Matter	89
Toxic Releases	71
Traffic	86
Pesticides	0
Drinking Water	76
Lead from Housing	75

Environmental Effects	
Cleanup Sites	95
Groundwater Threats	75
Hazardous Waste	84
Impaired Waters	59
Solid Waste	89

Sensitive Populations	
Asthma	18
Low Birth Weight	97
Cardiovascular Disease	58

Socioeconomic Factors	
Education	46
Linguistic Isolation	74
Poverty	38
Unemployment	28
Housing Burden	70

Wilson Middle School:



- 1 °F cooler than city average
- 49% impervious surfaces
- 9% tree covered
- Minority: 44%
- Households Below Poverty Level: 18%

Specific Concerns re installing Artificial Turf at this location:

- The sports field **is** the green space at this campus. There is hardly anything else impervious at this site.
- This is a Title 1 School with 1039 students. 63% of students are from low-income families.
- GUSD limits outdoor play when temps exceed 92 °F. Replacing current grass with massive artificial turf install will increase site temps.
- Synthetic turf fields will decrease the ability for this site to capture stormwater.
- Campus is 300 ft from 134 Freeway.
- Please notice that the current grass field is the largest greenspace in this area of the city:

Wilson Middle School
 Census Tract: 6037186301 (Population: 2,906)

The results for each indicator range from 0-100 and represent the percentile ranking of census tract 6037186301 relative to other census tracts.

Overall Percentiles	
CalEnviroScreen 4.0 Percentile	93
Pollution Burden Percentile	95
Population Characteristics Percentile	80

Exposures	
Ozone	67
Particulate Matter 2.5	70
Diesel Particulate Matter	60
Toxic Releases	73
Traffic	86
Pesticides	0
Drinking Water	60
Lead from Housing	78

Environmental Effects	
Cleanup Sites	91
Groundwater Threats	94
Hazardous Waste	65
Impaired Waters	59
Solid Waste	22

Sensitive Populations	
Asthma	67
Low Birth Weight	88
Cardiovascular Disease	34

Socioeconomic Factors	
Education	80
Linguistic Isolation	66
Poverty	82
Unemployment	77
Housing Burden	78

